

1143 Chobert

Brass · Dome head

2.4 mm (3/32") - 4.8 mm (3/16")

Features

- Consistent controlled clamp, ideal for soft or brittle materials
- Internally tapered bore ensures consistent light clamp to reduce potential damage to materials
- Expands radially during installation to ensure maximum hole fill
- Lower in-place costs than welding or nail rivets
- Ideal pivot pin or hose tail
- Can be bowl fed for larger volume applications using automated equipment
- Bright tin plated brass option for ease of soldering and good electrical conductivity

Material

- Brass, electro tin plated*



Other available options on request:

Dome head bright brass - Replace part no. **01143** with **01141**

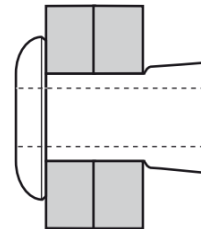
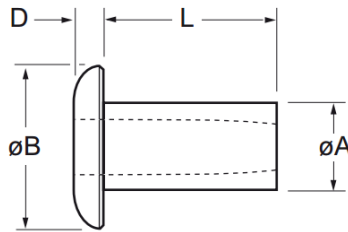
Dome head nickel plated brass - Replace part no. **01143** with **01147**

Countersunk head bright brass - Replace part no. **01143** with **01142**

Countersunk head electro tin plated brass - Replace part no. **01143** with **01144**

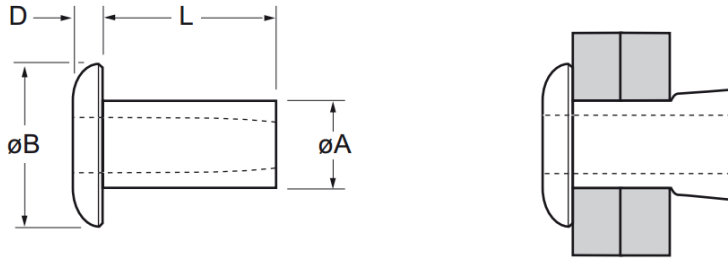
Countersunk head nickel plated brass - Replace part no. **01143** with **01148**

For assistance, contact your nearest [Gripwell](#) team



Part No.	Size ø	Grip Range		Hole Size		øB max.	D max.	L nom.	øA max.	Fasteners per pod ± 1	Shear (typical) kN
		min.	max.	min.	max.						
01143-00304	2.4 (3/32")	0.00	1.57	2.49	2.55	4.09	0.92	3.17	2.47	73	0.60
01143-00306		1.57	3.17							52	
01143-00308		3.17	4.75							41	
01143-00310		4.75	6.35							33	
01143-00312		6.35	7.92							28	
01143-00404	3.2 (1/8")	0.00	1.57	3.26	3.34	5.46	1.12	3.17	3.25	71	1.10
01143-00406		1.57	3.17							51	
01143-00408		3.17	4.75							39	
01143-00410		4.75	6.35							32	

* We recommend tin plated parts 1143 and 1144 Series are installed within 9 months from the date they were produced



Part No.	Size ø	Grip Range		Hole Size		øB max.	D max.	L nom.	øA max.	Fasteners per pod ± 1	Shear (typical) kN
		min.	max.	min.	max.						
01143-00506	4.0 (5/32")	1.57	3.17	4.09	4.17	6.47	1.45	4.75	4.04	47	1.80
01143-00508		3.17	4.75					6.35		38	
01143-00510		4.75	6.35					7.92		31	
01143-00512		6.35	7.92					9.52		27	
01143-00514		7.92	9.52					11.10		23	
01143-00516		9.52	11.10					12.70		21	
01143-00607	4.8 (3/16")	1.57	3.17	4.85	4.93	8.86	1.78	5.56	4.85	38	2.50
01143-00609		3.17	4.75					7.14		33	
01143-00611		4.75	6.35					8.74		28	
01143-00613		6.35	7.92					10.31		24	
01143-00615		7.92	9.52					11.91		21	
01143-00617		9.52	11.10					13.49		19	

Assembly Applications

- Automotive
- Electronic components
- Sheet metal
- Electrical engineering
- Domestic appliances
- General light fabrication
- Injection moulded components

